

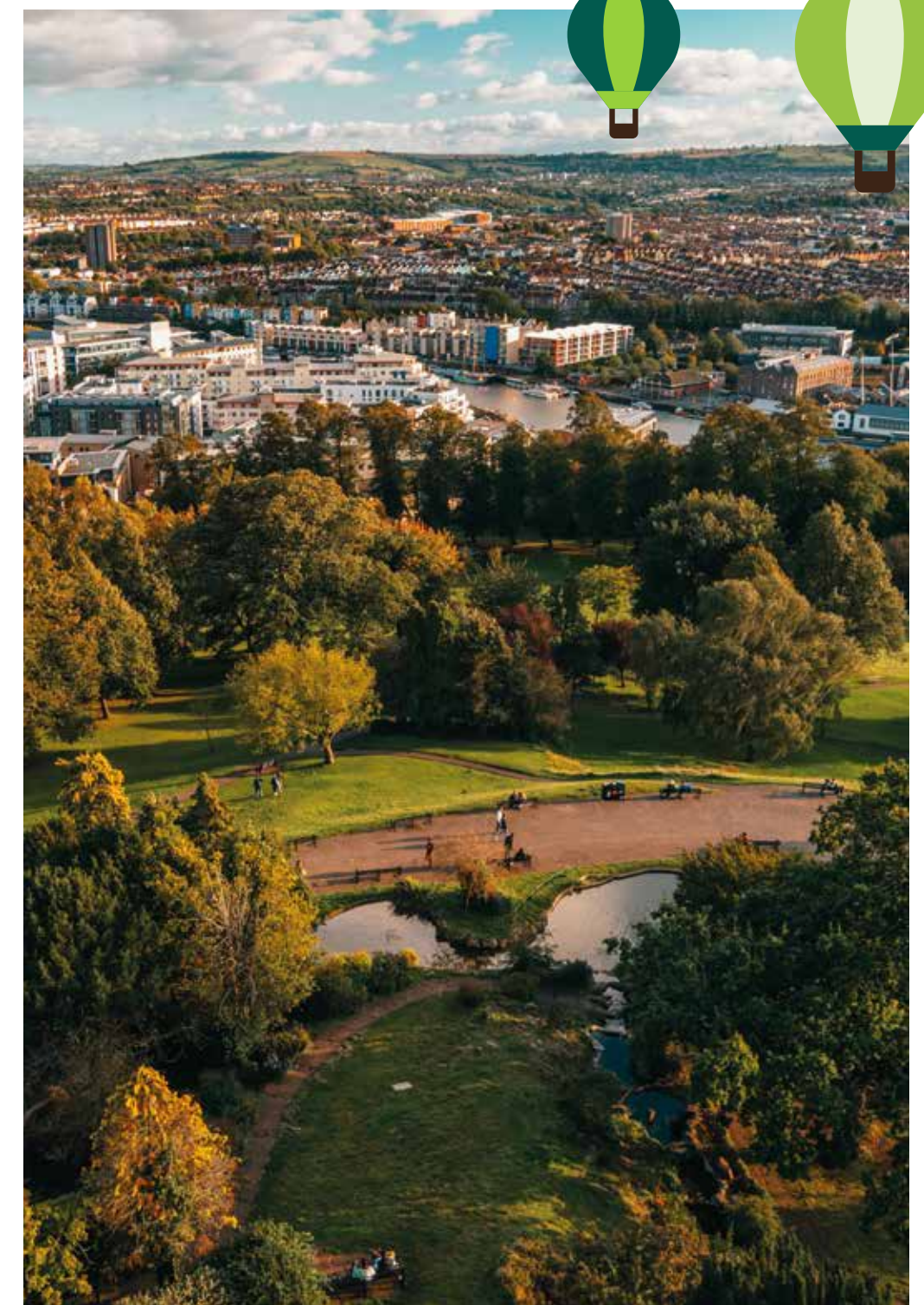
BRISTOL'S URBAN FOREST

Bristol has a reputation as a green, ambitious and innovative city. We have a sprawling urban forest of

600,000

trees which extends through our streets, parks, estates and gardens to make a huge contribution towards our quality of life.

The expanding city has a rich heritage of historic and iconic trees, with nationally important ancient woodlands and parks featuring rare whitebeams, found only in Bristol, complemented by more recent plantings in new developments.



BENEFITS

Trees are crucial for a thriving and resilient Bristol, with the urban forest valued at **£280,000,000**



100 tonnes of air pollution is removed every year by our trees



Bristol's trees soak up **90,000** cubic metres of water to help reduce flooding

Our trees store **360,000** tonnes of **CO₂** and remove **14,000** tonnes from the atmosphere every year, equivalent to the emissions of **9,000** cars



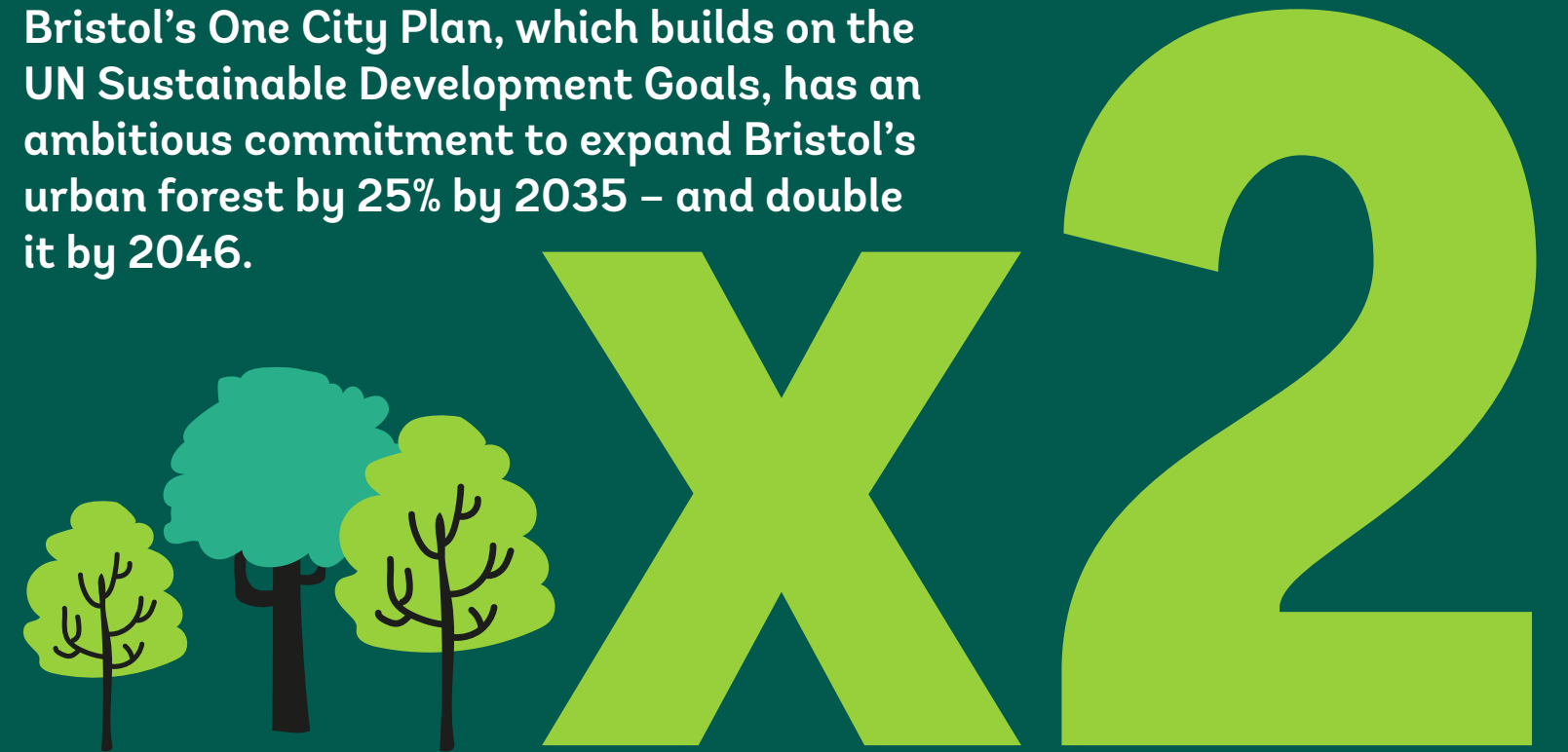
Trees provide vital urban greening and give us direct contact with nature, which is vital to our health and wellbeing



Trees reduce stress and boost the mental health of hospital patients, groups in need and the wider population

As our summers become increasingly hot, trees will help to provide essential shade

Bristol's One City Plan, which builds on the UN Sustainable Development Goals, has an ambitious commitment to expand Bristol's urban forest by 25% by 2035 – and double it by 2046.



CHALLENGES

Bristol's urban forest has always been dynamic: trees are planted, woodlands regenerate and trees eventually age and die.

Trees – especially in urban spaces – need to be managed to encourage diversity, bring light to a woodland floor, ensure our safety, protect important landscapes and habitats and avoid harm to buildings and structures.

However our urban forest is under threat, as 75% of the city's most common tree, the ash, is expected to be lost in the short to medium term as a result of ash dieback. The changing infrastructure of our city can also damage trees when not properly planned for.

We need to ensure that new planting is suited to a changing climate and planned into city development to sustain and expand the forest into the long-term.



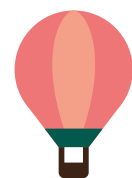
Photo: Chris Bain





REPLANT BRISTOL

Forest of Avon Trust, Bristol City Council, the Bristol Tree Forum and the Woodland Trust are working together as Replant Bristol to:



Protect

- Promote and influence tree management policy and practice, including through the emerging Local Plan and Green Infrastructure Plan.
- Provide skills training and build links with local woodland groups and markets to increase the percentage of well-managed woodlands.



Plant

- Increase the number of trees planted by communities and businesses by co-ordinating existing activity, supporting both community and corporate initiatives, and engaging with people across the city.
- Match interest in planting trees with suitable land across the city.

Participate

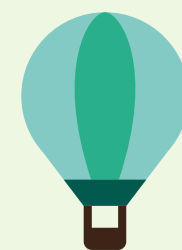
- Engage a wider range of organisations in working together to support action for Bristol's urban forest.
- Work with city residents and businesses so they understand the value of Bristol's trees and are empowered to take action.



Plan

- Secure additional funding for tree planting and community action, including woodland and tree care.
- Promote a joined-up approach that matches time, expertise, investment and land to deliver the right tree in the right place for the long term.
- Determine interest in the creation of a Bristol Tree Fund to encourage business sponsorship for new planting.

ACTION FOR TREES IN BRISTOL



There's already some fantastic work going on in the city to protect and grow Bristol's urban forest, including:

One Tree per Child

One Tree per Child gives children the opportunity to plant a tree and see it grow. Since 2015, over 57,000 trees have been planted in Bristol through a partnership with the Forest of Avon Trust and the Woodland Trust, along with the support of hundreds of volunteers.

Business Sponsorship

Many businesses are supporting community work in the city to aid the development of Bristol's urban forest. The OVO Foundation and Ernest Cook Trust recently donated £20,000 to the Forest of Avon Trust to deliver community skills training and help manage local woodlands.

Woodland Wellbeing

The Forest of Avon Trust has pioneered its woodland wellbeing approach in Bristol, securing NHS funding to deliver woodland based activity programmes for people with dementia and mental health needs.

Managing Bristol's Woodlands

The Forest of Avon Trust has worked with Bristol City Council to produce Woodland Management Plans for the city's 400 hectares of woodland, alongside skills training for local Friends groups, supported by Forestry Commission funding.

The Bristol Tree Forum

The Bristol Tree Forum has identified nearly £1 million of funding to replace trees lost to development, and is working with Bristol City Council to identify new planting sites – mostly where street trees have disappeared.

The Big Climate Fightback

The Bristol Tree Planting Project is taking part in the Woodland Trust's Big Climate Fightback campaign, collaborating with One Tree Per Child, Southmead Hospital and a team of volunteers to plant 1,000 trees in one weekend in November 2019. The project brings together people from all faiths, backgrounds and ages to learn more about the power of trees.





ONE TREE PER EMPLOYEE

Replant Bristol have launched a new scheme to plant 250,000 new trees in the city by 2030 and are looking for business support to make that happen.

The One City Plan to double our urban forest by 2046 is rightly ambitious and the need is critical. So this new campaign will encourage businesses to play their part by planting One Tree Per Employee and helping to grow a quarter of a million new trees over the next ten years. Launching in time for Christmas, businesses will be able to get involved in the scheme by planting trees on their own land, buying trees for staff to plant in their gardens, or by visiting

forestofavontrust.org/replant-bristol and donating £10 per employee to the campaign. The public can also make a huge difference – as we could grow an extra 440,000 trees in the city if we all planted a tree over the next 20 years. Replant Bristol aims to channel the energy of the Bristol public to identify suitable sites, promote tree planting and raise vital funds to make a real difference to Bristol's urban forest.



GET INVOLVED

Together we can help protect and grow Bristol's urban forest. There are lots of ways that you can play your part:

Donate

Planting a tree can cost between £10 and £300 and we need Bristol businesses and the general public to help support the growth of Bristol's urban forest.

Volunteer

There are lots of opportunities to get involved, from tree planting to ongoing tree care – you can even become a Bristol Tree Forum Tree Champion or help with its other activities. Big employers can also make a big difference by offer volunteering days to staff.

Plant

Whether you're a resident with your own garden or a business with an underused plot of land, we need to use the space we have to plant more trees. The Woodland Trust can help provide free trees for communities and support other planting projects. If you're not able to plant a tree yourself, why not encourage the community to get involved or help to identify possible planting sites in your area?

Pledge

Pledge your support to the campaign and share your ideas for how we can help to grow Bristol's urban forest.

Visit forestofavontrust.org/replant-bristol to find out more about Replant Bristol and play your part in supporting Bristol's urban forest.





The development and launch of Replant Bristol has been funded by the Woodland Trust's Street Trees project which is supported by players of People's Postcode Lottery. Replant Bristol is a catalyst group comprising of the Forest of Avon Trust, Bristol City Council, the Bristol Tree Forum and the Woodland Trust.

