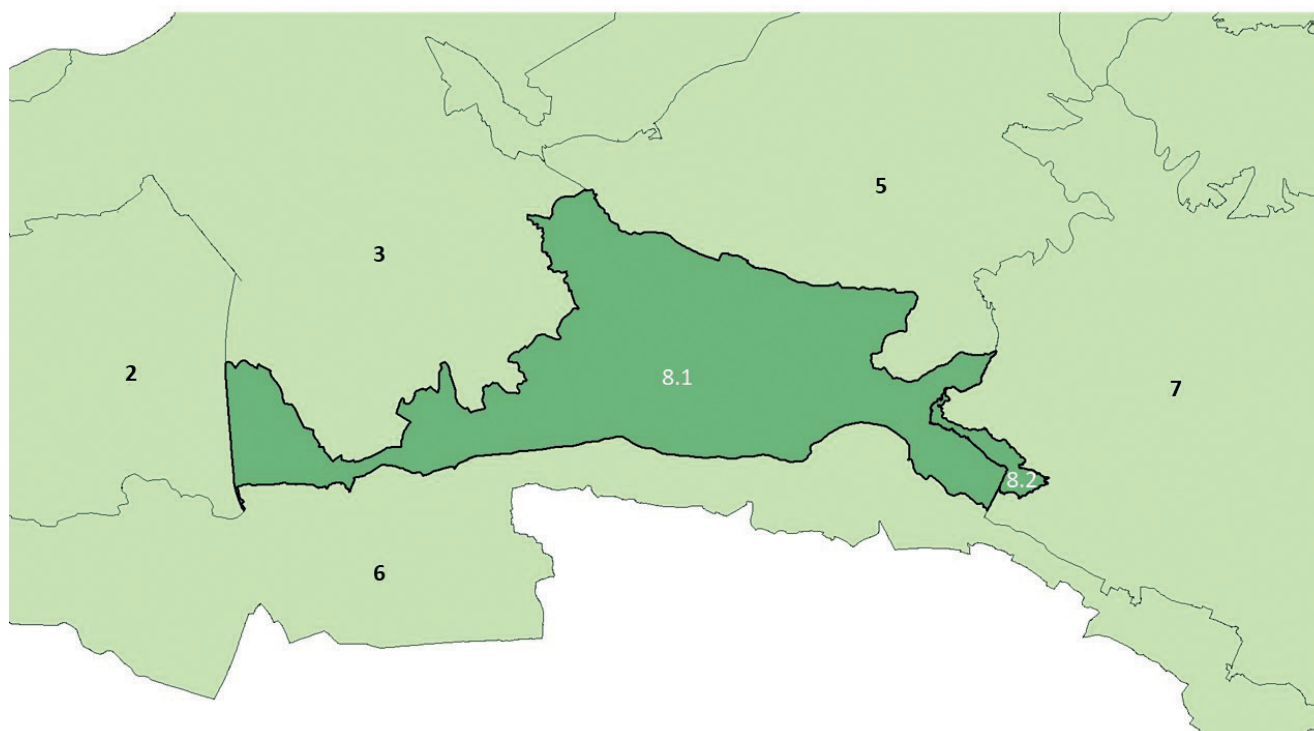


5.8 Yeo Valley and Spring Line Villages Forest of Avon



Map Ref: 8.1
Yeo Valley Rolling Valley Farmland (NSC J2)

- a. Ensure all woodlands have a current Forestry Commission management plan (or equivalent), addressing broad objectives, supporting their preparation and delivery.
- b. Establish new woodland linking across the 'Aldwick Gap' between 5.2 and 6.3 to create a woodland corridor between the northern fringe of the Mendip Hills and the extensive woodland complex in 5.2 linking Wrington, Congresbury and Flax Bourton.
- c. Ensure any new development requires the conservation and planting of trees within the site and as determined by scale and impact, includes off-site tree and woodland planting.
- d. Work with Thatcher's Cider to ensure maximum integration of commercial orchards into the wider landscape.
- e. Conserve and enhance orchards, prioritising those not covered by grant schemes, working to maintain locally distinctive varieties and extending

these whilst conserving priority habitats, historic monuments and viewpoints.

- f. Conserve and regenerate hedgerow boundaries with an initial focus on those outside Grant Schemes, which are not low cut and/or where hedgerow trees are present.
- g. Conserve hedgerow and other field trees and plant new ones at irregular spacings where absent within hedged boundaries.
- h. Ensure that public access routes are easy to use and follow.

**Map Ref: 8.2****Upper Chew and Yeo Valleys
(part of B&NES3)**

- a. Ensure all woodlands have a current Forestry Commission management plan (or equivalent), addressing broad objectives, supporting their preparation and delivery.
- b. Establish new woodlands of a scale, pattern and species mix appropriate to landscape character. Reflect catchment management priorities identified by BART and partners, and other priority habitats, which with those in 7.1 above, create a woodland corridor from east of Pensford to the northern slopes of the Mendip Hills.
- c. Ensure any new development requires the conservation and planting of trees within the site and as determined by scale and impact, includes off-site tree and woodland planting.
- d. Conserve and enhance orchards, prioritising those not covered by grant schemes, working to maintain locally distinctive varieties and extending these whilst conserving priority habitats, historic monuments and viewpoints.
- e. Conserve and regenerate generally well-managed hedgerow boundaries with an initial focus on those outside Grant Schemes, which are not low cut and/or where hedgerow trees are present.
- f. Conserve hedgerow and other field trees and plant new ones at irregular spacings where absent within hedged boundaries.
- g. Ensure that public access routes are easy to use and follow.